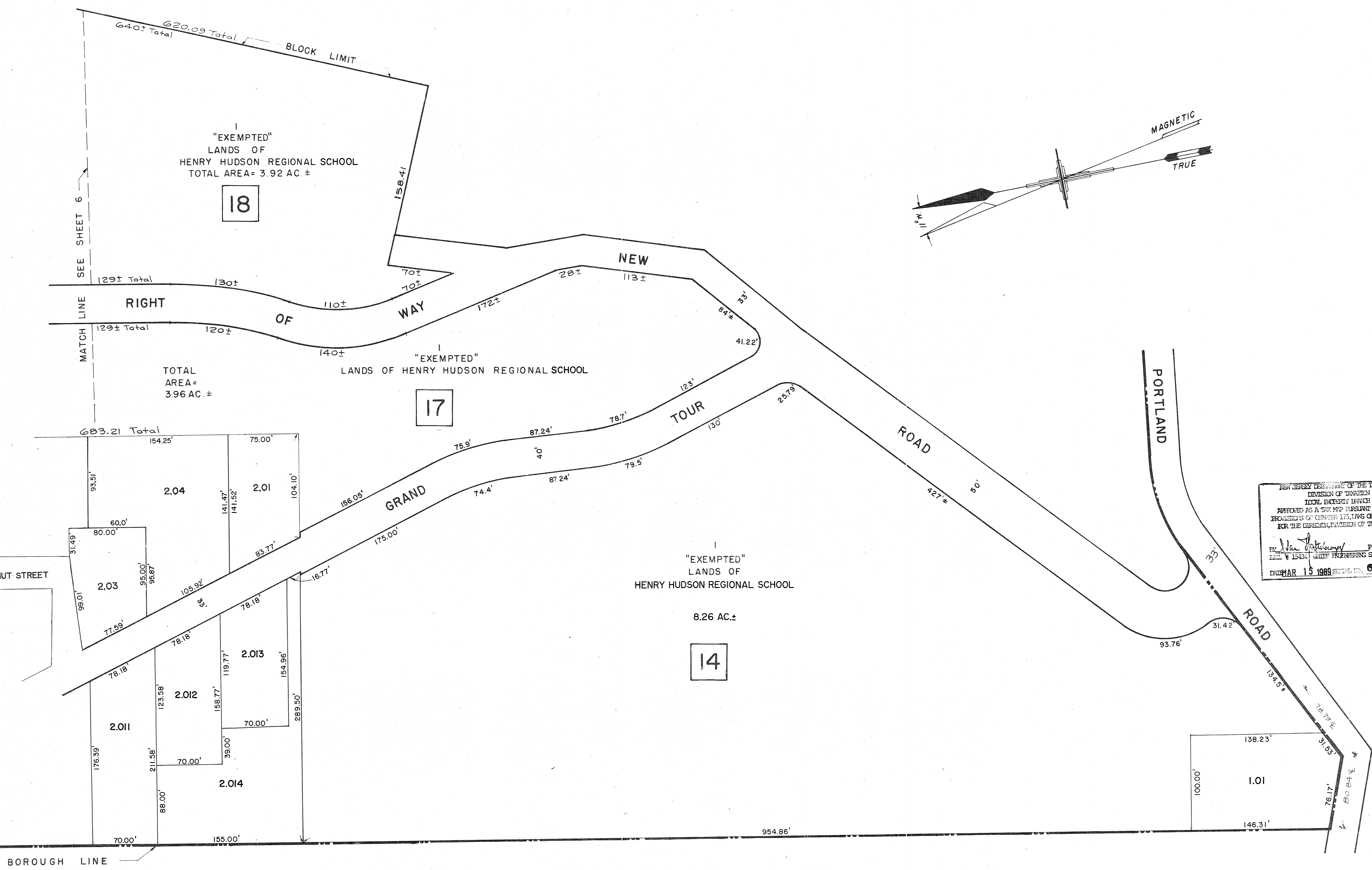


SHEET 6

SHEET 6



NEW JERSEY DEPARTMENT OF THE TREASURY
 DIVISION OF TAXATION
 LOCAL EXEMPT LANDS
 APPROVED AS A TAX MAP PURSUANT TO THE
 PROVISIONS OF CHAPTER 175, LAWS OF 1913, ETC.
 FOR THE DIVISION OF TAXATION
 BY *[Signature]* P.E. & L.S.
 DEC. 15 1968 CHIEF ENGINEERING SECTION
 DRAWN MAR 15 1969 SERIAL NO. 688

" TOWNSHIP OF MIDDLETOWN "

REVISIONS	
DEC. 1974	R.M. SCHULZ PE, S.L.S.
JUNE 1976	A.F. POSTEL PE & L.S.
DEC. 1982	D.H. YOROKANIS P.L.S.
AUG. 1988	D.W. KORTZE P.L.S.
DEC. 1988	D.W. KORTZE P.L.S.
JAN. 2002	T.T. CRADER P.L.S.
02-28-05	RICHARD A. MORALLE, P.L.S.
06/30/2010	" "

NEW JERSEY DEPARTMENT OF THE TREASURY
 DIVISION OF TAXATION
 PUBLIC UTILITY TAX BUREAU
 APPROVED AS A TAX MAP PURSUANT TO THE
 PROVISIONS OF CHAPTER 175, LAWS OF 1913, ETC.
 FOR THE DIVISION OF TAXATION
 BY *[Signature]*
 DATE DEC 2 1968 SERIAL NO. 464

TAX MAP
 BOROUGH OF HIGHLANDS
 MONMOUTH COUNTY, N. J.
 SCALE: 1" = 50'
 DATE: OCT., 1968
 Frederick M. Moller
 Licensed Land Surveyor No. 5610
 95 First Avenue, Atlantic Highlands, New Jersey