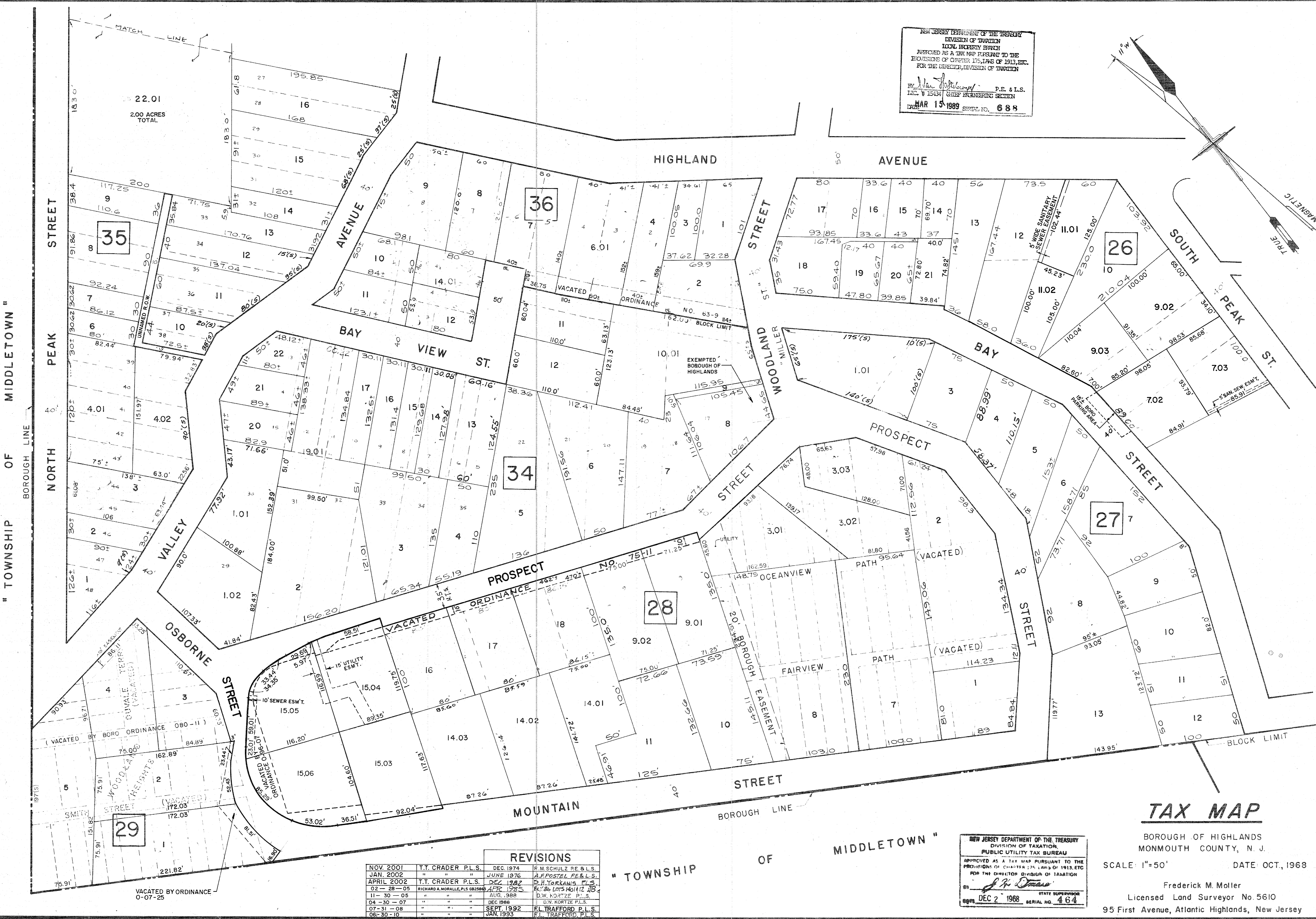
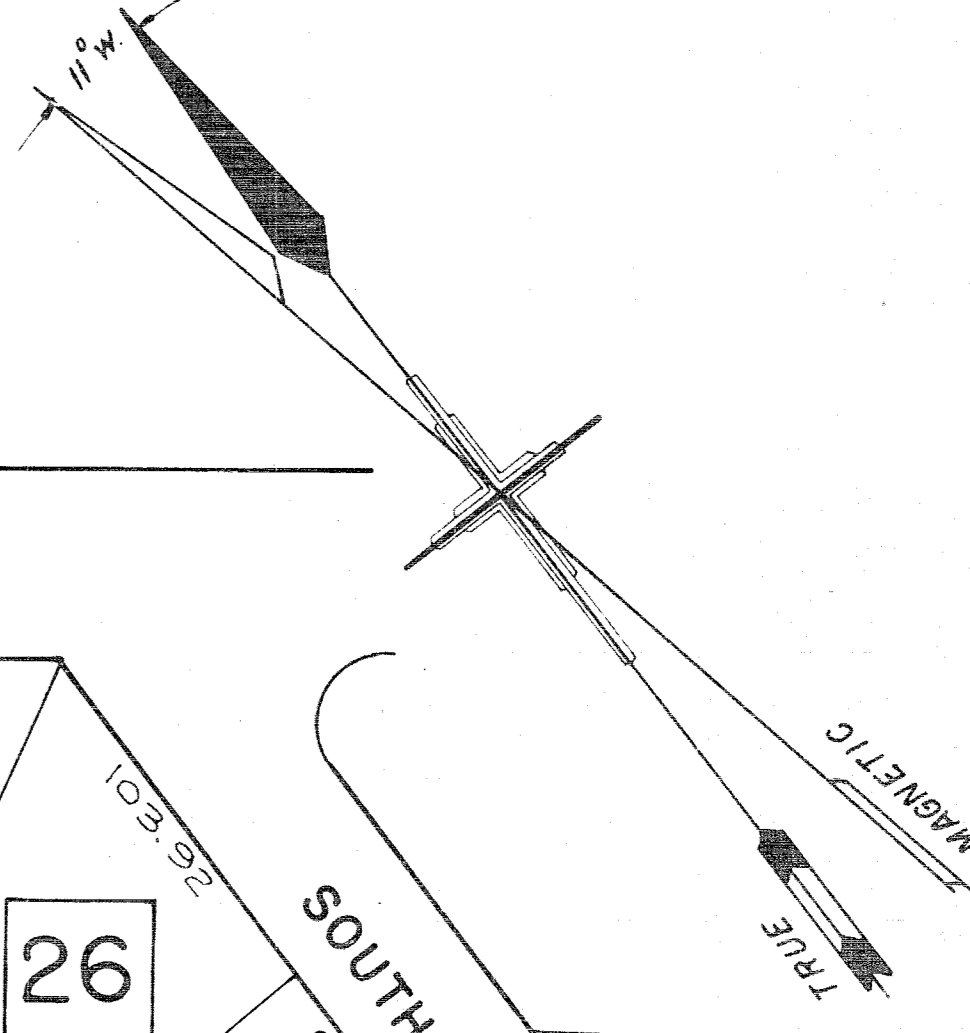


NEW JERSEY DEPARTMENT OF THE TREASURY
 DIVISION OF TAXATION
 LOCAL EXERCISEY BUREAU
 APPROVED AS A TAX MAP PURSUANT TO THE
 PROVISIONS OF CHAPTER 175, LAWS OF 1913, ETC.
 FOR THE DIRECTOR, DIVISION OF TAXATION

BY *[Signature]* P.E. & L.S.
 INC. # 15341 CHIEF ENGINEERING SECTION
 DATE: MAR 15 1968 SERIAL NO. 688



22.01
2.00 ACRES
TOTAL

35

36

26

34

28

27

29

VACATED BY ORDINANCE
0-07-25

REVISIONS

NOV. 2001	T.T. CRADER P.L.S.	DEC. 1974	R.M. SCHULZ RE & L.S.
JAN. 2002	"	JUNE 1976	A.F. POSTEL RE & L.S.
APRIL 2002	T.T. CRADER P.L.S.	DEC. 1982	D.H. YORKAN'S P.L.S.
02-28-05	RICHARD A. MORALLE, P.L.S. 022506	APR. 1985	60'x80' LOTS #11 & 12
11-30-05	"	AUG. 1988	D.W. KORTZE P.L.S.
04-30-07	"	DEC. 1988	D.W. KORTZE P.L.S.
07-31-08	"	SEPT. 1992	F.L. TRAFFORD P.L.S.
08-30-10	"	JAN. 1993	F.L. TRAFFORD P.L.S.

NEW JERSEY DEPARTMENT OF THE TREASURY
 DIVISION OF TAXATION
 PUBLIC UTILITY TAX BUREAU
 APPROVED AS A TAX MAP PURSUANT TO THE
 PROVISIONS OF CHAPTER 175, LAWS OF 1913, ETC.
 FOR THE DIRECTOR, DIVISION OF TAXATION

[Signature]
 DEC 2 1968 SERIAL NO. 464

TAX MAP

BOROUGH OF HIGHLANDS
 MONMOUTH COUNTY, N. J.

SCALE: 1"=50' DATE: OCT., 1968

Frederick M. Moller
 Licensed Land Surveyor No. 5610
 95 First Avenue, Atlantic Highlands, New Jersey

" TOWNSHIP OF MIDDLETOWN "

" TOWNSHIP OF MIDDLETOWN "

" TOWNSHIP OF MIDDLETOWN "

SHEET 6

SHEET 6