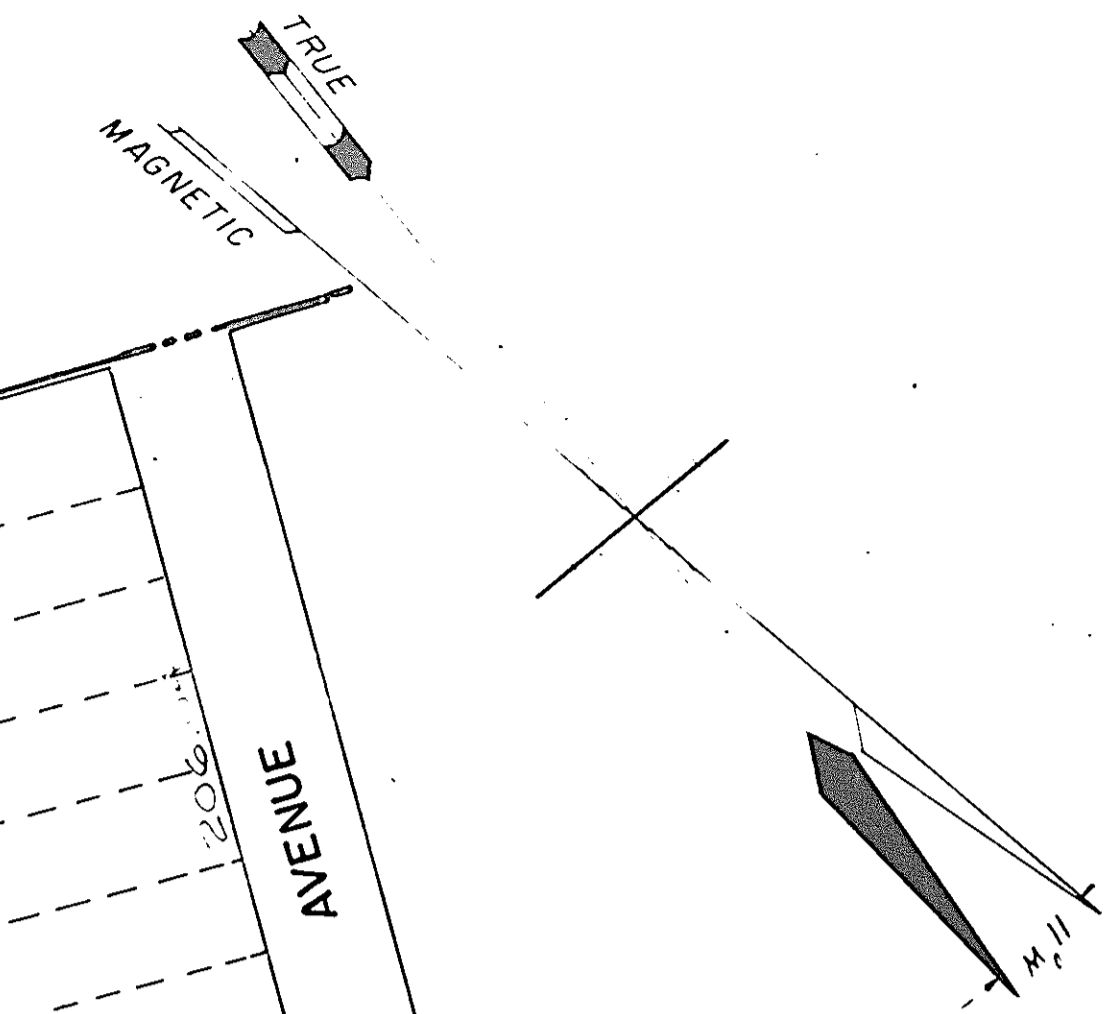


REVISIONS		APRIL 2002	T.T. CRADER P.L.S.
DEC 1974	R.M. SCHULZ PE & L.S.	04-30-07	
JUNE 1976	R.F. POSTER, PE & L.S.	06-30-15	
DEC 1982	D.H. YORKANIS P.L.S.	05-31-16	
AUG 1989			
DEC 1988	O.W. KORTZE P.L.S.		
SEPT 1992	E.L. TRAFFORD P.L.S.		
APRIL 1993	E.L. TRAFFORD P.L.S.		
JAN 2002	T.T. CRADER, P.L.S.		

DEPARTMENT OF THE TREASURY  
DIVISION OF TAXATION  
LOCAL PROPERTY BRANCH  
APPROVED AS A TAX MAP PURSUANT TO THE  
PROVISIONS OF CHAPTER 175, LAWS OF 1913, ETC.  
FOR THE DIRECTOR, DIVISION OF TAXATION

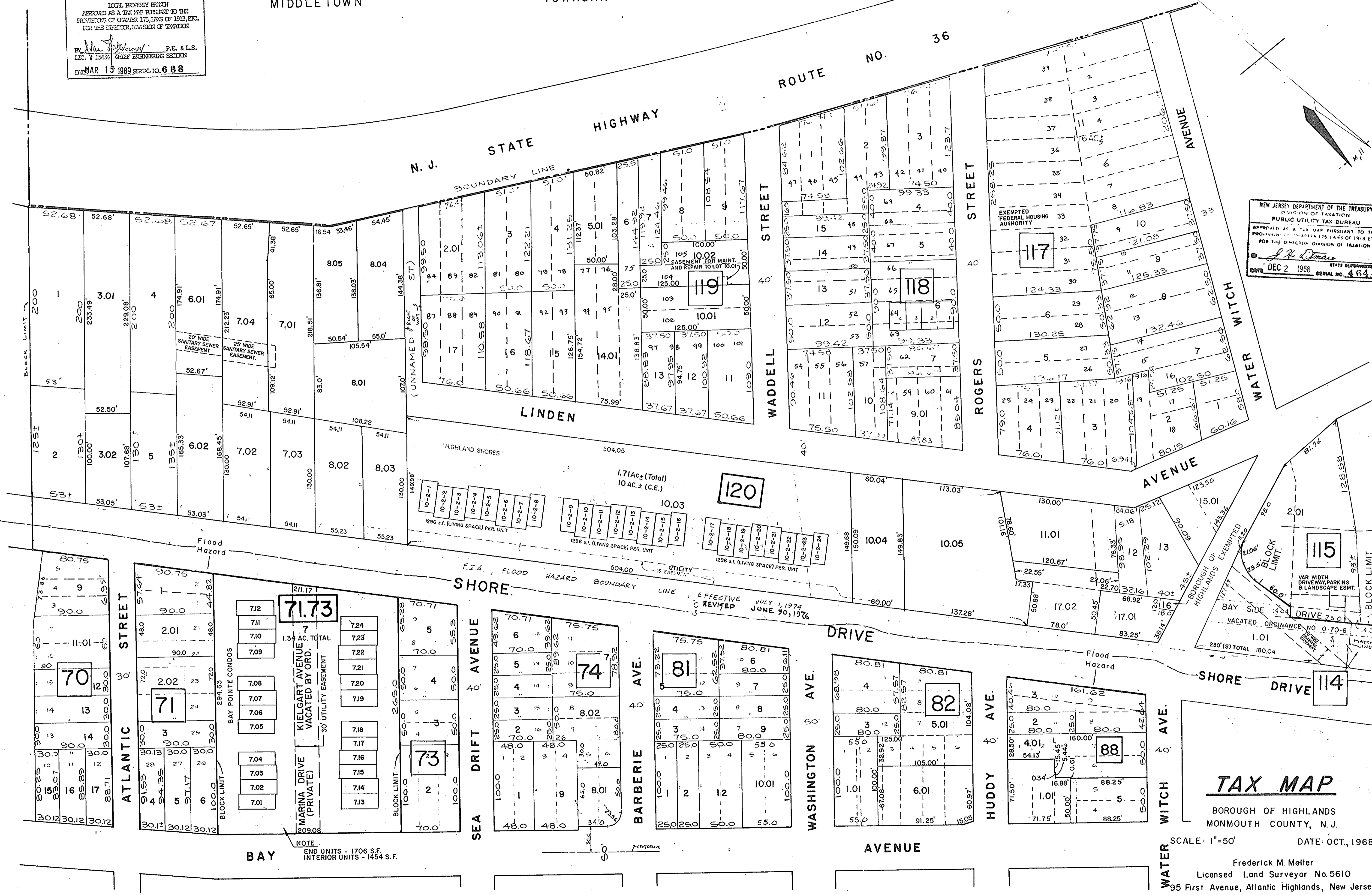
BY: *[Signature]* P.E. & L.S.  
LIC. # 15431 CHIEF ENGINEERING SECTION  
DATE: MAR 15 1989 SERIAL NO. 688

MIDDLE TOWN TOWNSHIP



NEW JERSEY DEPARTMENT OF THE TREASURY  
DIVISION OF TAXATION  
PUBLIC UTILITY TAX BUREAU  
APPROVED AS A TAX MAP PURSUANT TO THE  
PROVISIONS OF CHAPTER 175, LAWS OF 1913, ETC.  
FOR THE DIRECTOR, DIVISION OF TAXATION

*[Signature]* STATE SUPERVISOR  
DATE: DEC 2 1988 SERIAL NO. 464



"HIGHLAND SHORES"  
1.71Ac± (Total)  
10 Ac.± (C.E.)  
1296 s.f. (LIVING SPACE) PER UNIT

F.I.A. FLOOD HAZARD BOUNDARY LINE EFFECTIVE JULY 1, 1974 REVISED JUNE 30, 1976

NOTE  
END UNITS - 1706 S.F.  
INTERIOR UNITS - 1454 S.F.

BAY MARINA DRIVE (PRIVATE)  
KIELGART AVENUE VACATED BY ORD.  
1.34 AC. TOTAL  
30' UTILITY EASEMENT

**TAX MAP**

BOROUGH OF HIGHLANDS  
MONMOUTH COUNTY, N.J.

SCALE: 1"=50' DATE: OCT, 1968

Frederick M. Motter  
Licensed Land Surveyor No. 5610  
95 First Avenue, Atlantic Highlands, New Jersey

SHEET 14

SHEET 12

SHEET 14 SHEET 16

SHEET 16 SHEET 17

SHEET 17 SHEET 18