

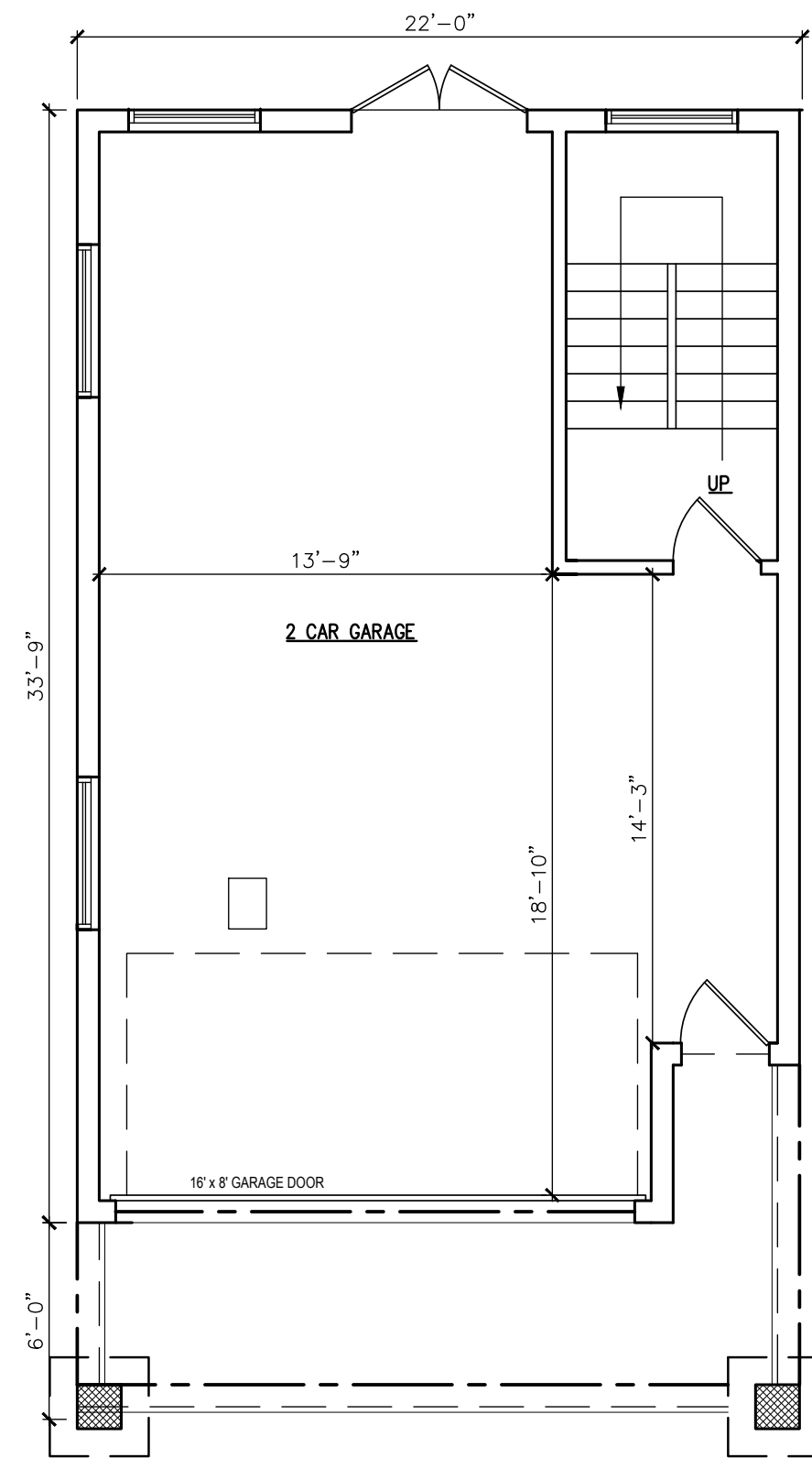


**1 FRONT ELEVATION**  
Scale: 3/16" = 1'-0"

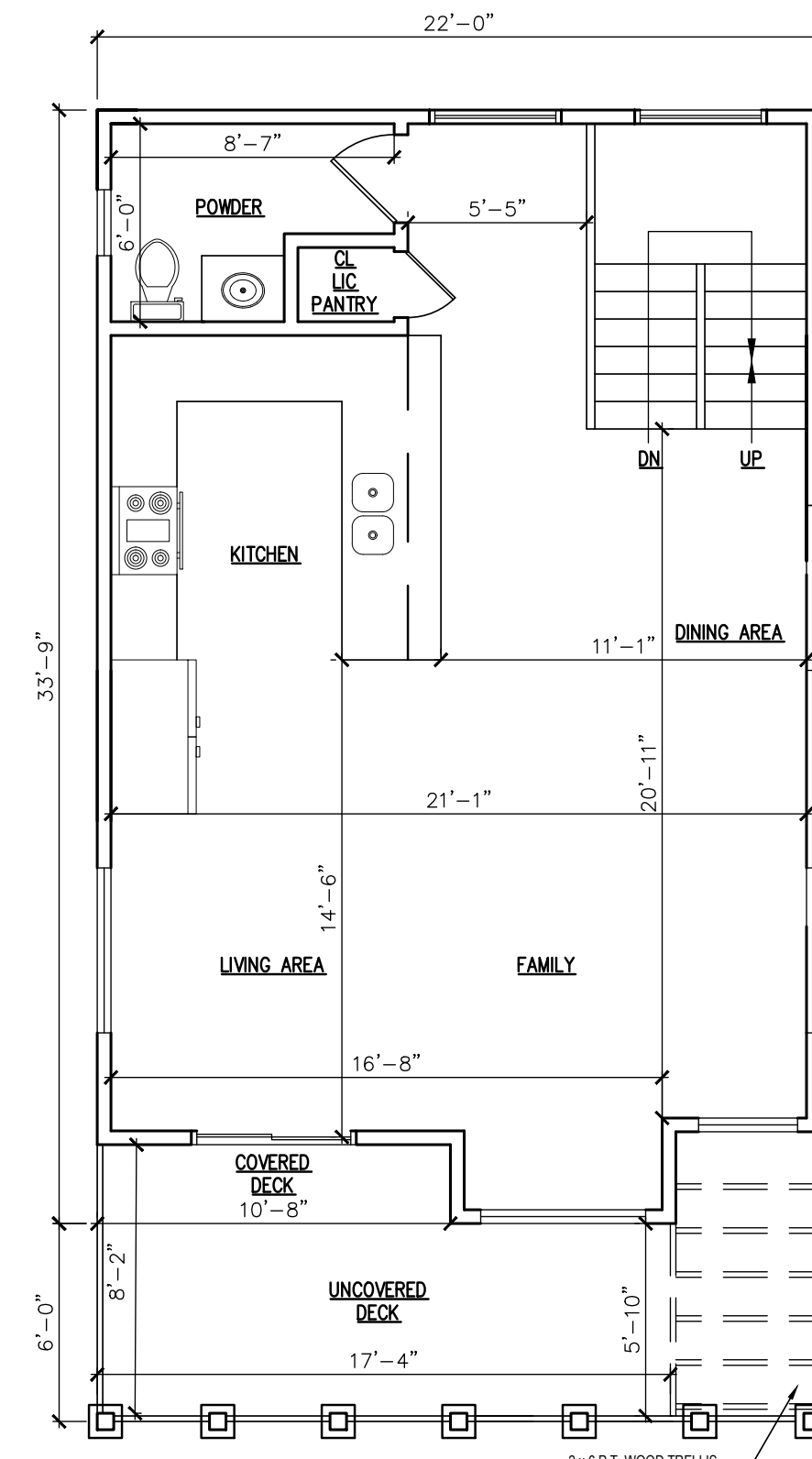
**2 RIGHT SIDE ELEVATION**  
Scale: 3/16" = 1'-0"

**3 REAR ELEVATION**  
Scale: 3/16" = 1'-0"

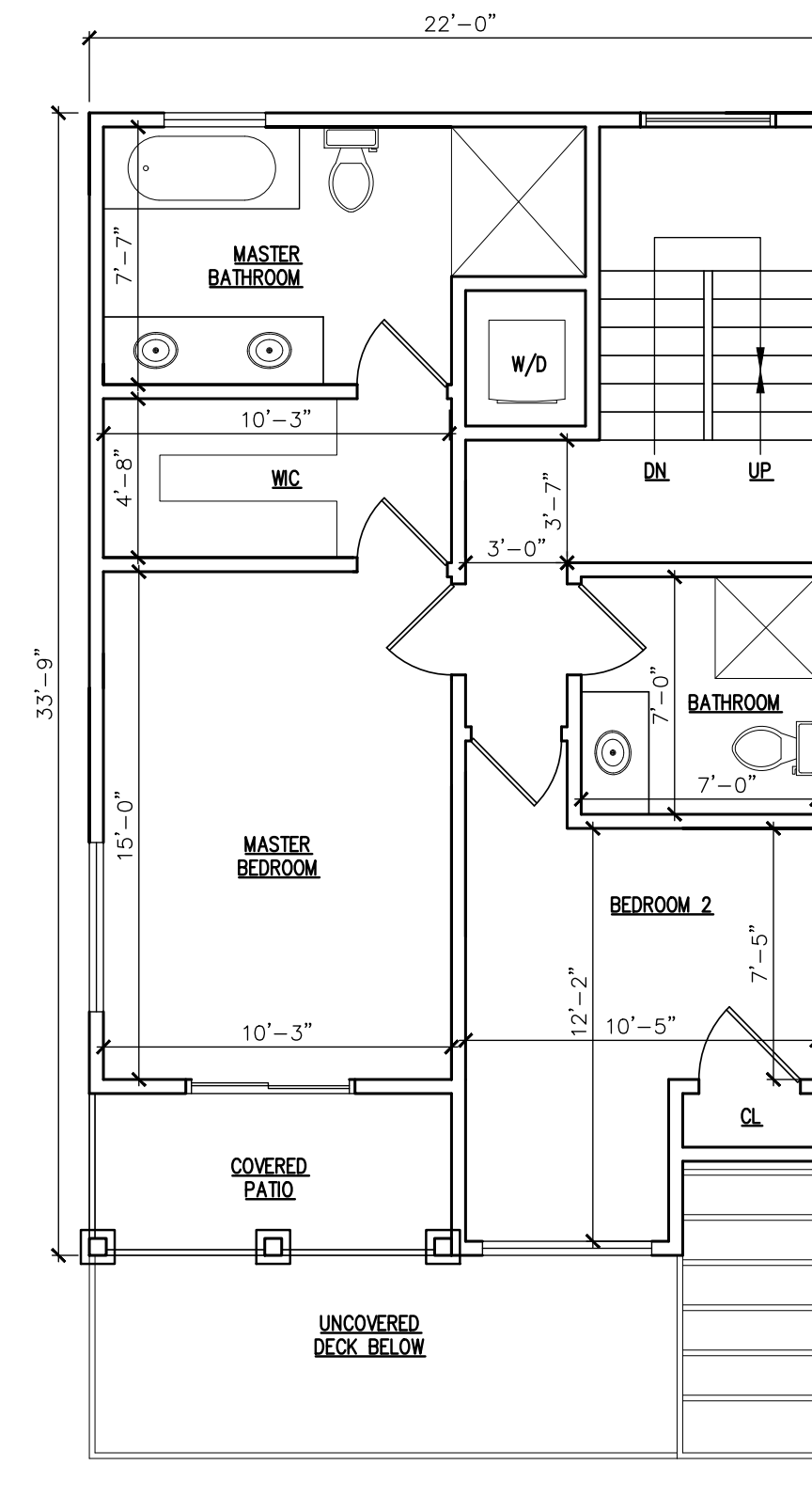
**4 LEFT SIDE ELEVATION**  
Scale: 3/16" = 1'-0"



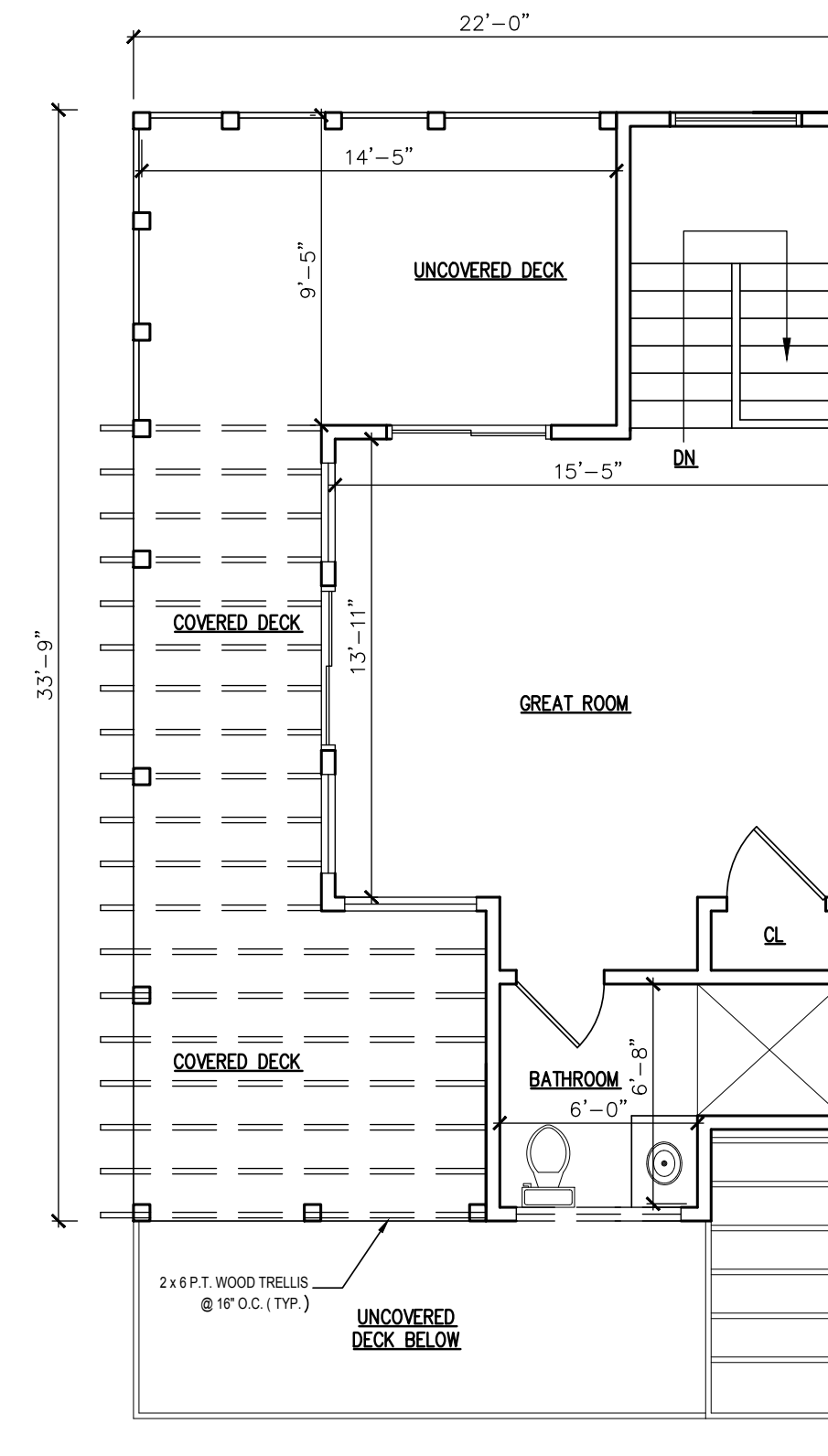
**5 GROUND FLOOR PLAN**  
Scale: 3/16" = 1'-0"



**6 FIRST FLOOR PLAN**  
Scale: 3/16" = 1'-0"



**7 SECOND FLOOR PLAN**  
Scale: 3/16" = 1'-0"



**8 ROOF PATIO FLOOR PLAN**  
Scale: 3/16" = 1'-0"

AREAS ( NET ) :	
GROUND FLOOR	721 SQFT
FIRST FLOOR	702 SQFT
1ST FLR DECK	130 SQFT
SECOND FLOOR	676 SQFT
2ND FLR COVD DECK	51 SQFT
ROOFTOP LIVING SPACE	401 SQFT
ROOFTOP DECK	324 SQFT

PROJECT: **PROPOSED NEW CONSTRUCTION**  
SINGLE FAMILY DWELLING

Document Date:  
July 22, 2021

Document Phase:  
Design drawings not for construction  
For zoning board submission only

Revision	Date	Remark

RECEIVED  
08/03/2021  
LAND USE BOARD

ZONING BOARD OF ADJUSTMENT APPROVAL

APPROVED BY THE ZONING BOARD OF ADJUSTMENT BY THE TOWNSHIP OF HIGHLANDS,  
COUNTY OF MONMOUTH, STATE OF NEW JERSEY ON \_\_\_\_\_ BY RESOLUTION  
# \_\_\_\_\_

CHAIRMAN	DATE
SECRETARY	DATE
MUNICIPAL ENGINEER	DATE

Floor plans &  
Elevations

**A 1.0**